



## ABOUT US

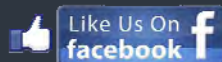
**PrymeFix is the fixturing line for PrymeTech, a leading manufacturer of CNC machined components and sophisticated metrology fixturing solutions.**

PrymeTech offers an extended machine shop without the headaches of overhead and maintenance. Our experienced staff can take a product from concept to creation. We understand what it takes to design, manufacture and inspect product. We combine innovative design solutions with state of the art machining technologies to provide our customers with high quality precision CNC machined component parts for a wide variety of industries. Established in 2006, our shop includes all of the amenities expected to be found in a modern day shop. Every tool and machine has been strategically placed to make our facility as efficient as possible. Our shop stays highly organized based on industry concepts like Khan ban and 5-S. Our staff includes experienced machinists as well as highly educated engineers. Working together as a team, we have fully integrated proven machining techniques with state of the art technology. Computer Aided Design (CAD) and Computer Aided Machining (CAM) is utilized on a daily basis to ensure product accuracy. At PrymeTech, we expect the best from our employees. Our customers see the difference.



155 Prairie Lake Road, Suite A  
East Dundee, IL 60118  
Office: 847.428.7122  
Fax: 847.213.9938  
Email: [sales@prymetech.com](mailto:sales@prymetech.com)

[www.prymetech.com](http://www.prymetech.com)  
[www.prymefix.com](http://www.prymefix.com)



# PrymeFix

## FIXTURING COMPONENTS



## FIXTURING KITS

Fixture Kits include an assortment of components to create your own custom holding system on any PrymeFix insert. Kit components mount to any 1/4-20 or M4 threaded inserts with PrymeFix Converter Screws (included).

Available in a variety of configurations, our kits are tailored to the industries needs. They contain a locking wrench, M2 Allen wrench, 1/8" hex Allen wrench, and an organizer box.

Visit our website [www.prymefix.com](http://www.prymefix.com) to see what kits are available.

## FIXTURING KIT COMPONENTS

While not limited to these uses, below is a list of the most common ways that certain components can be utilized.

**Resting Cone:** Perfect for holding parts with a flat surface to rest on.

**Stand-Off:** The most diverse part in any kit! These can be used as a surface to rest a part on, to elevate a part higher off of a fixture, or as part of a 3-point-contact.

**Micro Corner:** Provides a repeatable and straight location to easily place small parts.

**Touch Clamps:** Hold parts in place to ensure there is no movement during measurement.

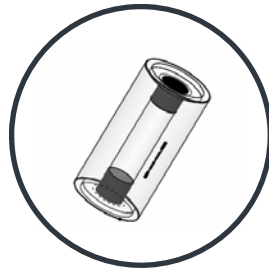
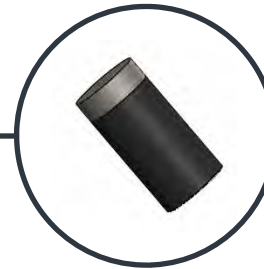
**Magnetic V-Block:** Perfect for holding round or cylindrical parts. The magnetic connection helps secure the part.

### Common Fixture Components



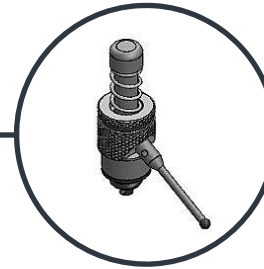
Metallic Standoffs

Magnetic Standoffs



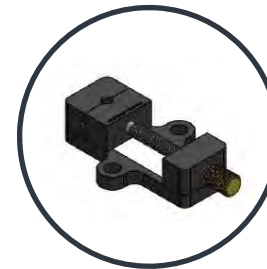
Acrylic Standoffs

Touch Clamps



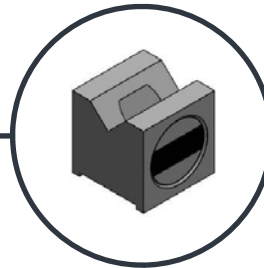
Resting Cones

### Common Fixture Components



Mini Vices

Magnetic V-Blocks



Slide Arms



Micro-Corners



For more details and a complete product listing, check out the PrymeFix website!

[WWW.PRYMEFIX.COM](http://WWW.PRYMEFIX.COM)